

Milu FW10 Intelligent Shoeprint Scanning System



- World's first 1200dpi Contactless Shoeprint scanning system for latent Shoeprint scanning and meet the demand of identification
- Superior optics with advanced design for exceptional Shoeprint imaging
- One button to scan automatically
- Image transfer to Tablet in seconds
- User friendly GUI for image viewing and processing



Supporting Dust, bloody and wet shoe impression scanning

1200 DPI

Scanning high resolution image for identification



Rug, Light and Compact

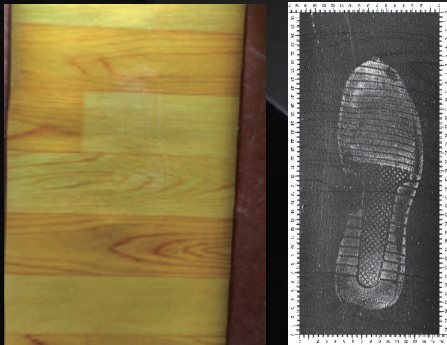


App support searching Shoeprint from Database

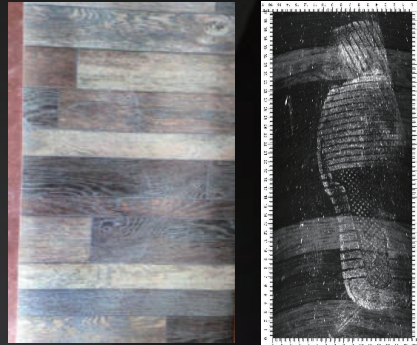


Laser indicator bloody and wet shoe impression scanning

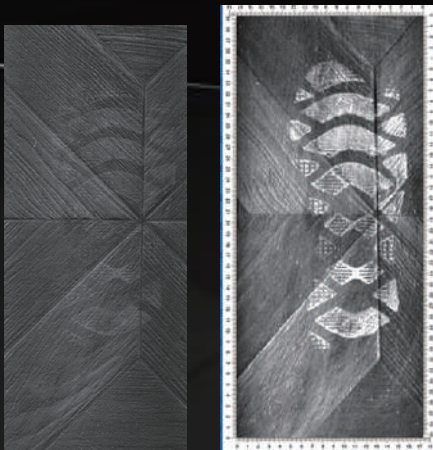
Scanning area



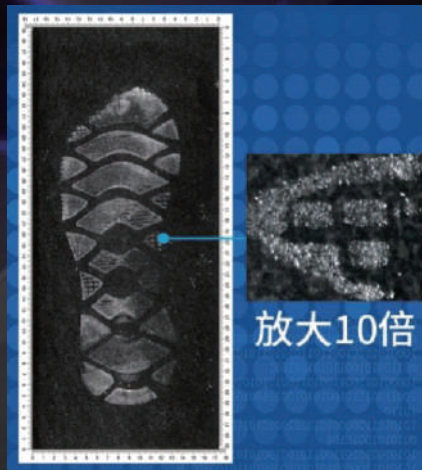
Scanning Dust shoeprint yellow artificial leather floor



Scanning wet shoeprint on artificial leather floor



Scanning Wet shoeprint left grey artificial leather floor



Magnification to see details of shoe pattern

